

REMIS glass covers for refrigeration and chest freezers



Product catalogue 2020/2021

Pioneer, developer and forward thinker

Whether for refrigerated wall multi-decks or refrigeration and chest freezers, with REMIS you get more than 40 years of experience in the development of radiation-resistant materials, attractive, low-resource and flexibly adjustable covers for all standard refrigeration cabinet types.

REMIS glass covers and insulating glass doors are an investment in cost effectiveness, climate protection customer acceptance and the future!

Attractive and contemporary

REMIglas enables premium, modern and cost-effective goods displays. With REMIglas you can offer your customers optimally refrigerated products. The appealing design of the easy-to-use glass covers results in an attractive look and an inviting shopping atmosphere.

Profitable and climate-friendly

With REMIglas you can save up to 77% of refrigeration costs. This lowers CO₂ pollution and your costs. Moreover, it enables you to actively support climate protection which, in turn, has a positive effect on your reputation. The glass covers pay for themselves within a short space of time thanks to reduced electricity expenses.



Discover the world of REMIS

- REMIS Glas - Product overview 4**
- Product comparison for glass covers..... 5**
 - EcoFlex Push: Stable modular glass cover 6 - 7
 - EcoFlex Push T: Transparent glass cover for single-unit refrigerators and chest freezers 8 - 9
 - EcoFlex Slide: Frameless glass cover for a premium look..... 10 - 11



REMIS - Product overview

REFRIGERATION & CHEST FREEZERS

Push (forward / backward)

- Opening mechanism
- Glazing
- Catalogue pages



EcoFlex Push

Vertical system
Single glazing 4 mm
6 - 7



EcoFlex Push T

Vertical system
Single glazing 4 mm
8 - 9

REFRIGERATION & CHEST FREEZERS

Slide (left / right)

- Opening mechanism
- Glazing
- Catalogue pages



EcoFlex Slide

Horizontal System
Single glazing 4 mm
10 - 11

Product comparison for glass covers for refrigeration and chest freezers

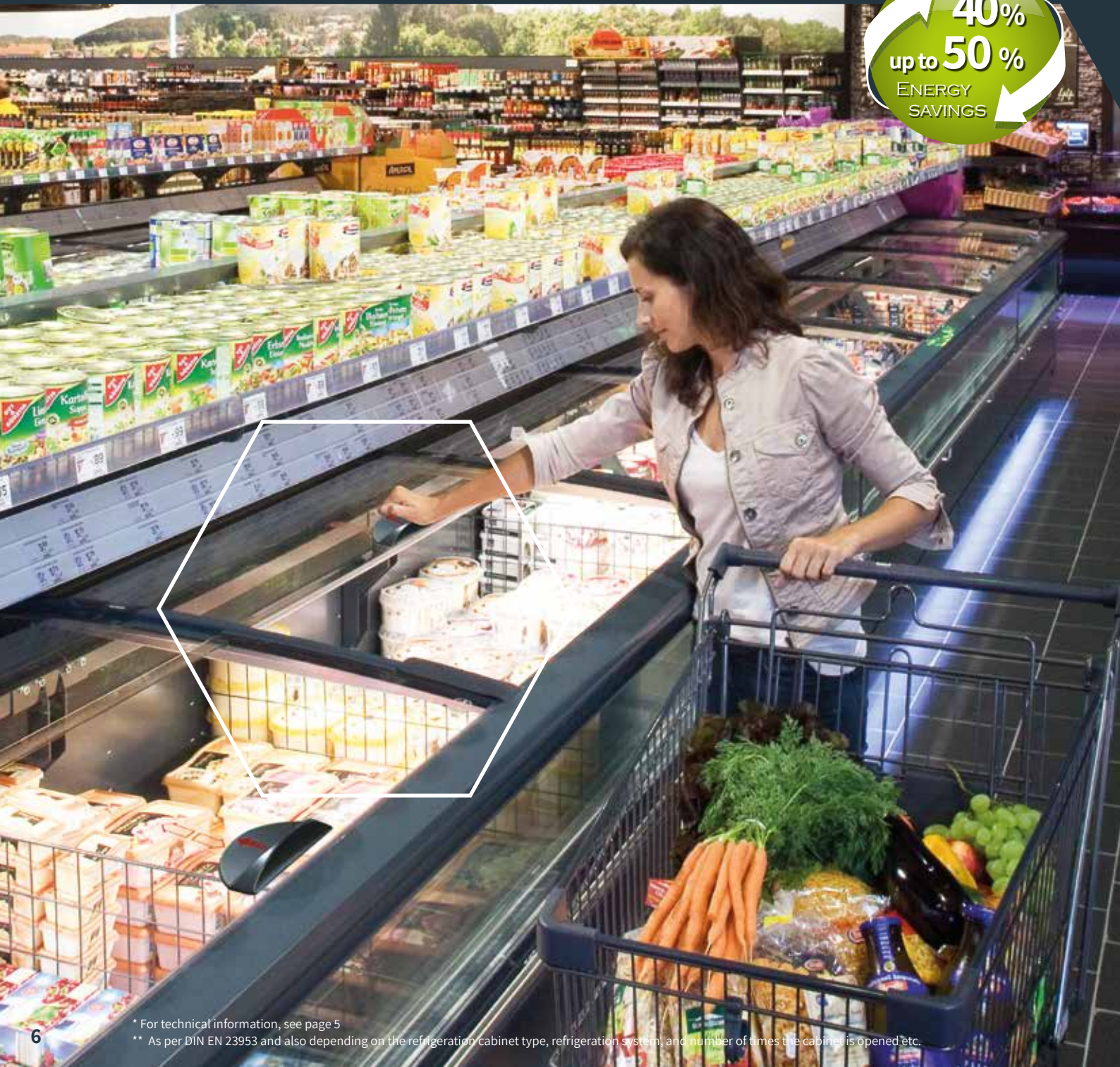
	EcoFlex Push	EcoFlex Push t	EcoFlex Slide
Handrail profiles	All-round aluminium handrail profile H = 65 mm		
Handles	RAL 7016		
Beading profile	RAL 7016		
Cover width	1700 - 2300 mm	1800 - 2100 mm	1700 - 2300 mm
Cabinet length	1875 mm, 2500 mm, 3750 mm (Raster 625mm)		
Cabinet type	Floor cabinet, wall cabinet and end cabinet	Floor cabinet and end cabinet	Floor cabinet, wall cabinet and end cabinet
Panes	4 mm single-pane safety glass		
Glass type	Floor cabinet curved, end cabinet flat		Curved lengthwise furniture, Head furniture flat
Opening dimensions	1200 mm x (350 mm - 450 mm)	1200 mm x (500 mm - 600 mm)	550 mm x 800 mm
Lighting	LED lighting		
Climate class	3L1 (25° C / 60 % r.F. / -18° C)		
Energy savings	40 - 50 %	40 - 50 %	40 - 50 %

Glass covers for refrigeration and chest freezers: EcoFlex Push*

The advantages at a glance

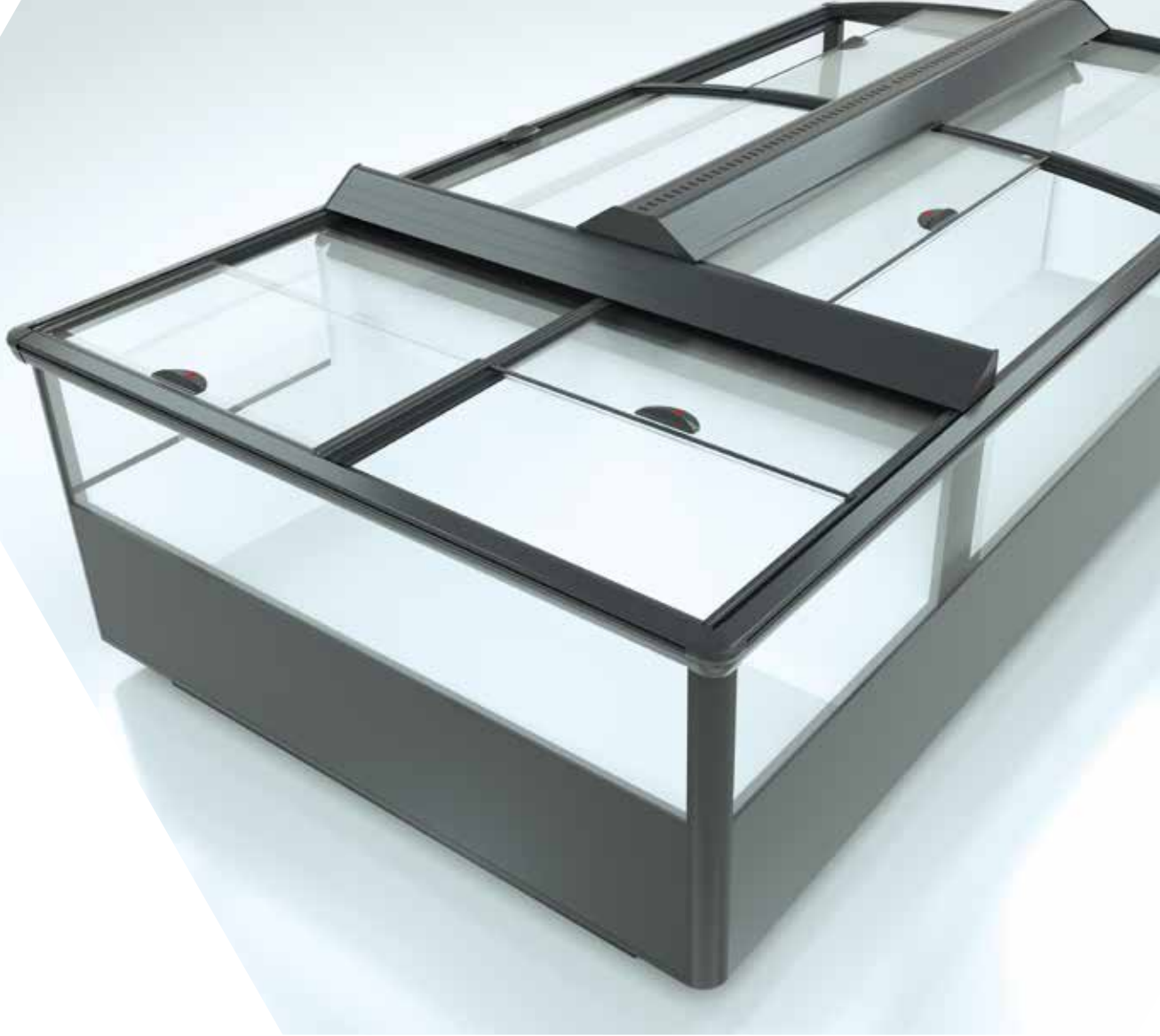
- Large opening -> Several customers can serve themselves simultaneously
- Modern goods display with a high level of transparency and even refrigeration
- Radiation-reflective hard coating which also prevents condensation from forming

40%
up to 50%
ENERGY
SAVINGS



* For technical information, see page 5

** As per DIN EN 23953 and also depending on the refrigeration cabinet type, refrigeration system, and number of times the cabinet is opened etc.



Glass covers for refrigeration and chest freezers: EcoFlex Push T

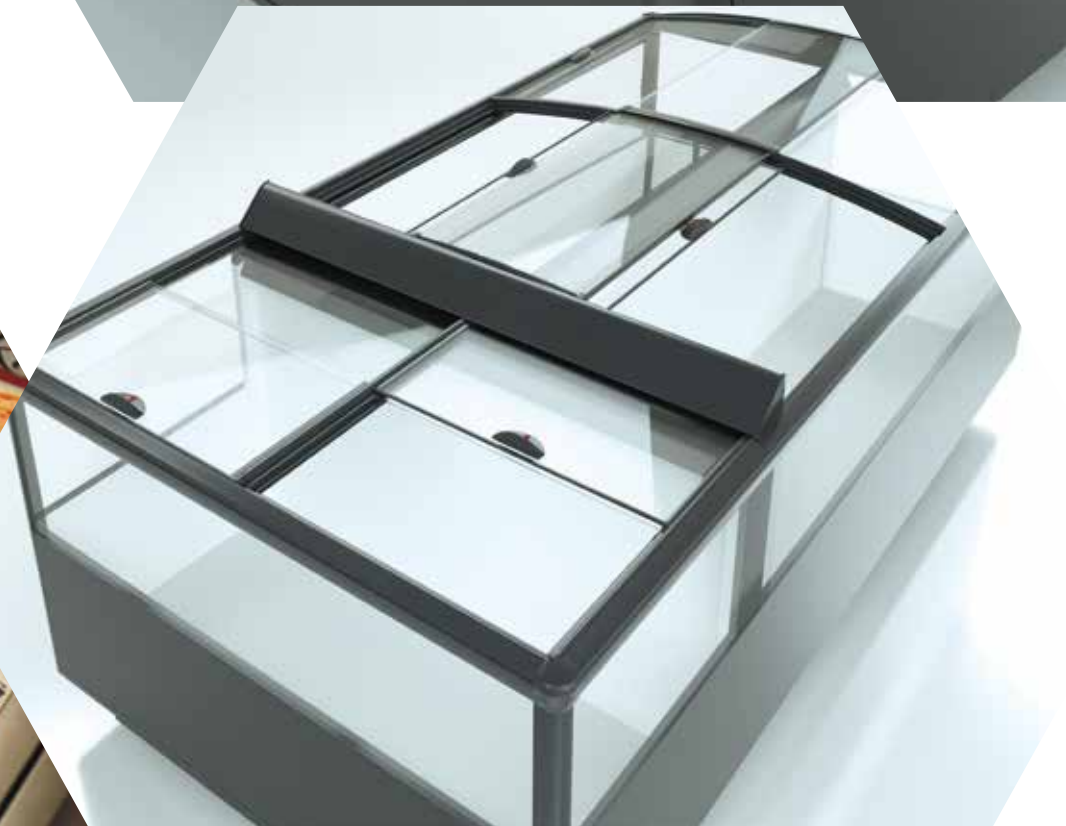
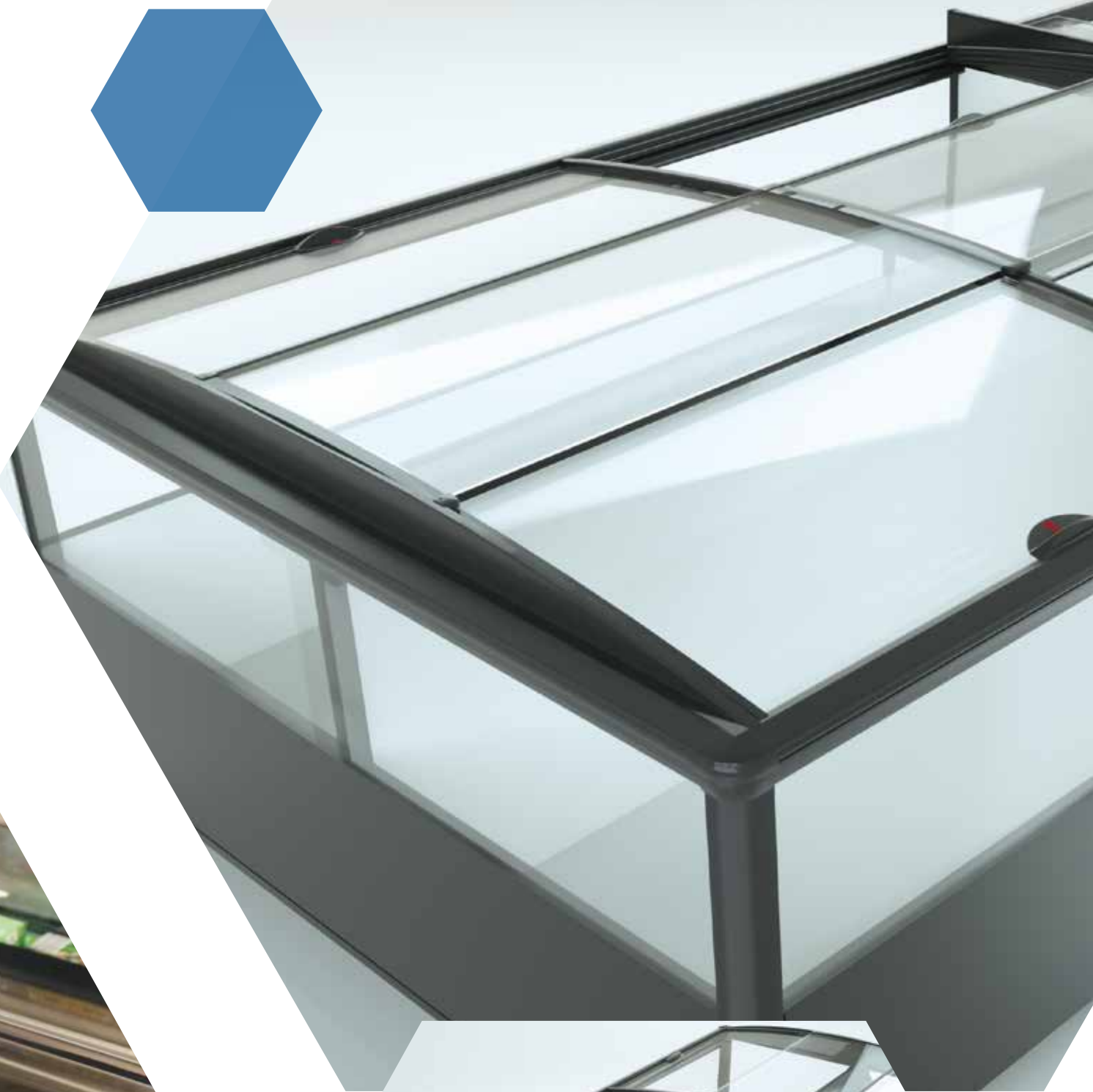
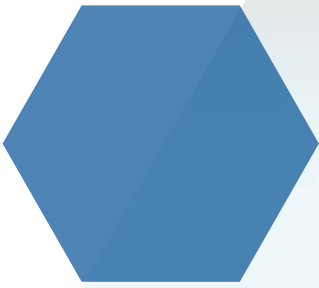
The advantages at a glance

- Particularly large opening with rapid access from both sides
- Attractive look, ergonomic and extremely long-lasting
- Vertical slide, promotes sales and uncomplicated



* For technical information, see page 5

** As per DIN EN 23953 and also depending on the refrigeration cabinet type, refrigeration system, and number of times the cabinet is opened etc.



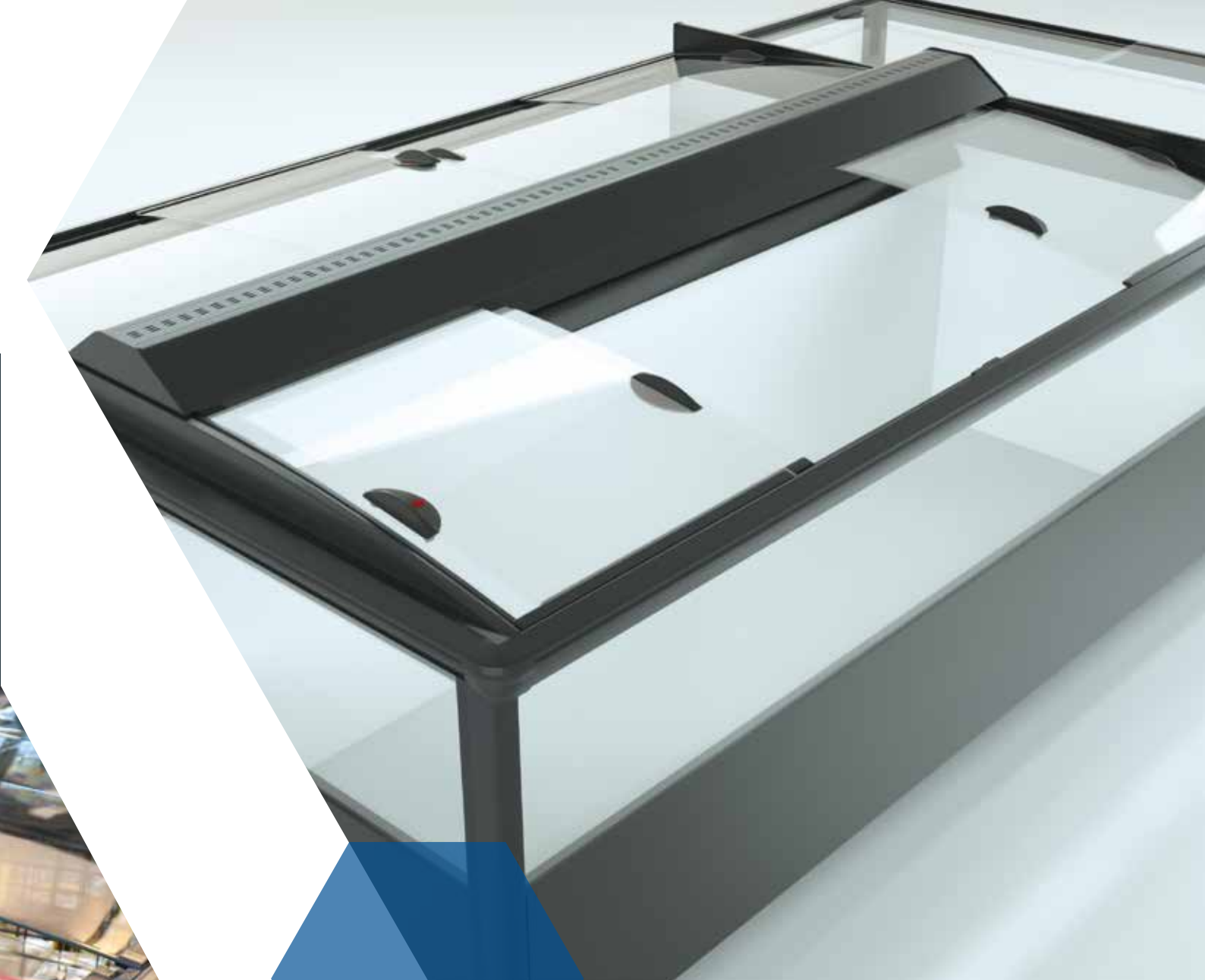
Glass covers for refrigeration and chest freezers: EcoFlex Slide

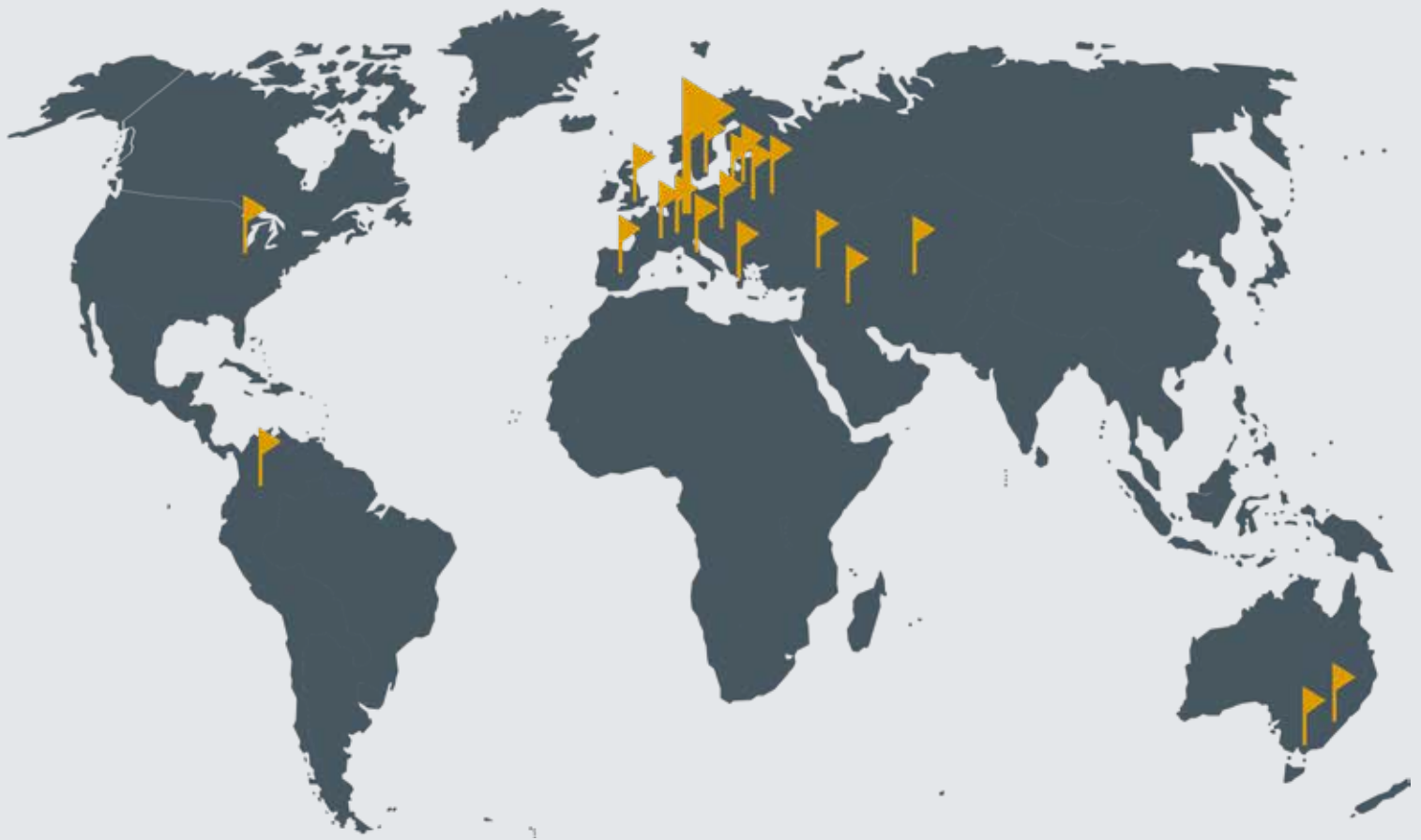
The advantages at a glance

- Frameless glass cover with a modern, high-quality look
- Optional LED lighting on the handrail and centre bar
- Very large opening for easy access and cleaning

40%
up to **50%**
ENERGY SAVINGS







REMIS

REMIS GmbH

Mathias-Brueggen-Str. 67-69
D-50829 Cologne

Tel.: +49 (0)221 / 7 88 80 - 0

Fax: +49 (0)221 / 7 88 80 - 249

Internet: www.remis.de

Mail: remis@remis.de